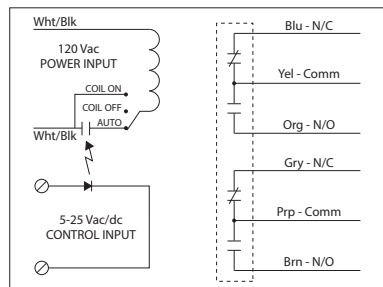


LOW COIL INPUT RELAYS

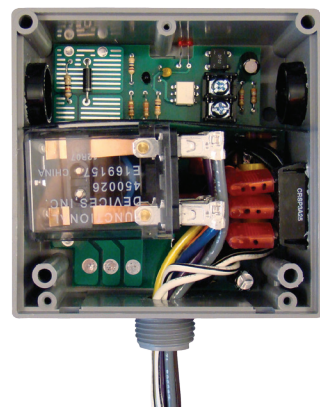
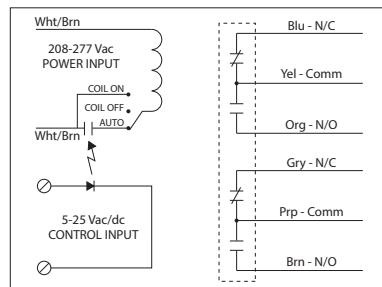
RIBTE01P-S

Enclosed Relay Hi/Low Separation 20 Amp DPDT +Override, **120 Vac Power Input** + 5-25 Vac/dc Control Input



RIBTE02P-S

Enclosed Relay Hi/Low Separation 20 Amp DPDT +Override, **208-277 Vac Power Input** + 5-25 Vac/dc Control Input



Made in USA Meets "Buy American" of ARRA 2009

RELAYS

SPECIFICATIONS

- Power Input:** 120 Vac, 50-60 Hz (RIBTE01P-S)
208-277 Vac, 50-60 Hz (RIBTE02P-S)
- Control Input:** 5-25 Vac/dc, 50-60 Hz
- # Relays & Contact Type:** One (1) DPDT Continuous Duty Coil
- Expected Relay Life:** 10 million cycles minimum mechanical
- Operating Temperature:** -30 to 140° F
- Humidity Range:** 5 to 95% (noncondensing)
- Operate Time:** 18ms
- Relay Status:** LED On = Activated
- Dimensions:** 4.00" x 4.00" x 1.80" with .50" NPT Nipple
- Wires:** 16", 600V Rated
- Approvals:** UL Listed, UL916, UL864, C-UL California State Fire Marshal
- Housing Rating:** UL Accepted for Use in Plenum, NEMA 1
- Gold Flash:** Yes
- Override Switch:** Yes*

- Contact Ratings:**
20 Amp Resistive @ 300 Vac
20 Amp Resistive @ 28 Vdc
15 Amp Resistive @ 600 Vac
20 Amp Ballast @ 277-480 Vac
Not rated for Electronic Ballast
770 VA Pilot Duty @ 120 Vac
1158 VA Pilot Duty @ 240 Vac
1110 VA Pilot Duty @ 277 Vac
1640 VA Pilot Duty @ 480 Vac
3 HP @ 480-600 Vac
2 HP @ 240-277 Vac
1 HP @ 120 Vac

- Control Input Ratings:**
.4 mA @ 5 Vdc
.9 mA @ 10 Vdc
1 mA @ 12 Vdc
2 mA @ 24 Vdc
3 mA @ 24 Vac (Non Polarized)

- Power Input Ratings:**
105 mA @ 120 Vac (RIBTE01P-S)
105 mA @ 208-277 Vac (RIBTE02P-S)

- Notes:**
• Override capability is made possible by supplying constant voltage on the Power Input. No Control Input Voltage is necessary to override the relay. *