

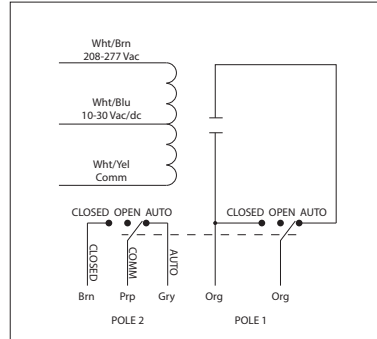
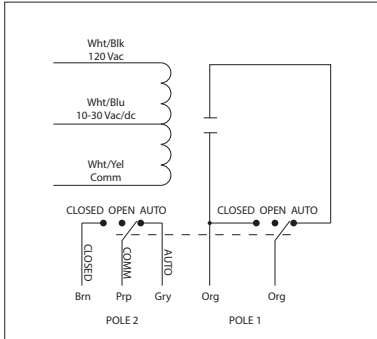
10 AMP PILOT CONTROL RELAYS

RIBU1SM-250

Enclosed Relay 10 Amp SPST-N/O + Override
+ Monitor with 10-30 Vac/dc/**120 Vac Coil**

RIBH1SM-250

Enclosed Relay 10 Amp SPST-N/O + Override
+ Monitor with 10-30 Vac/dc/**208-277 Vac Coil**



RELAYS

SPECIFICATIONS

- # Relays & Contact Type:** One (1) SPST Continuous Duty Coil
- Expected Relay Life:** 10 million cycles minimum mechanical
- Operating Temperature:** -30 to 140° F
- Humidity Range:** 5 to 95% (noncondensing)
- Operate Time:** 20ms
- Relay Status:** LED On = Activated
- Dimensions:** 2.30" x 3.20" x 1.80" with .50" NPT nipple
- Wires:** 16", 600V Rated
- Approvals:** UL Listed, UL916, UL864, C-UL California State Fire Marshal
- Housing Rating:** UL Accepted for Use in Plenum, NEMA 1
- Gold Flash:** Yes
- Override Switch:** Yes + Monitor

- Contact Ratings:**
 - 10 Amp Resistive @ 120/250 Vac
 - 345 VA Pilot Duty @ 120/240 Vac
 - 211 VA Pilot Duty @ 120/240 Vac
 - 1/3 HP @ 120-240 Vac (N/O)
 - 1/6 HP @ 120-240 Vac (N/C)

- Coil Current:**
 - 55 mA @ 30 Vac
 - 28 mA @ 120 Vac (RIBU1SM-250)
 - 39 mA @ 208-277 Vac (RIBH1SM-250)
 - 20 mA @ 30 Vdc

- Coil Voltage Input:**
 - 10-30 Vac/dc ; 120 Vac ; 50-60 Hz (RIBU1SM-250)
 - 10-30 Vac/dc ; 208-277 Vac ; 50-60 Hz (RIBH1SM-250)
 - Drop Out = 2.1 Vac / 2.8 Vdc
 - Pull In = 9 Vac / 10 Vdc

- Notes:**
 - Second pole of override switch can be connected to digital-in of controller to report position of override switch
 - Rating of second pole is 250 Vac max and 5 Amp max
 - Order Normally Closed by adding "-NC" to end of model number