

ML7984

Fully Modulating Valve Actuator



The ML7984 is a self-contained, self-adjusting, linear motorized linkage that mounts directly onto V5011 two-way or V5013 three-way valves and provides up to 19 mm (3/4") of linear travel (stem lift). For use with Series 70 2-10Vdc; 4-20mA and Series 90 135 Ω ; Electronic "Super Mod" modulating controllers.

- Self-contained, motorized valve linkage.
- Linkage self-adjusts to valve stroke of up to 19mm (3/4")
- Multipoise mounting
- Strong valve seat closing force 710 Newton (160 lbs.)
- Compact size for easy installation in confined areas
- Electronic current sensing provides internal protection and positive full closing force
- Field addable auxiliary switches available
- Separate models available for V5011/13 A and C or V5011/13 F and G valve body types

- Allows the use of one common transformer power supply for multiple actuators and controllers
- Compatible with 3 -wire system (one common wire for both signal & power input)
- Field-configurable DIP switches for Direct / Reverse action
- Field-configurable DIP switches for Series 70 / 90 control function
- Field-selectable terminals for 2-10Vdc / 4-20 mA control input
- One device for either Vac / Vdc power supply application

Specifications

Models:

Model Numbers	Valve Types	Valve Stroke
ML7984A3001	V5011 / V5013 F,G	19mm (3/4")
ML7984A3019	V5011 / V5013 A,C	19mm (3/4")

Electrical Ratings:

Power supply/consumption:
24V (Nominal), 50/60Hz or
24 to 28 Vdc
6VA(Running), 12VA(Valve seating)**

Ambient Rating:

Operating Temperature:
0°C to 55°C (32°F to 130°F)
Shipping Temperature:
-40°C to +65°C (-40°F to 150°F)
Relative Humidity:
15% to 95% at 40°C (104°F)

Acoustic Noise:

55 DBA max. Sound Pressure Level at 1 m (39") distance.

Input Impedance:

Voltage Model -- 20 KOhm
Current Model -- 237 Ohm

Mechanical Ratings:

Stroke--19mm (3/4") or less
Stroke timing-- Approx. 63 seconds for 3/4" stroke
Closing Force-- 710N (160 lbs.) minimum*
1070N (240 lbs.) maximum*
Breakaway Force-- 710N (160 lbs.)
Stalling Force-- 2225N (500 lbs.) maximum*

*Rating applies to both directions.

**Also during stall condition.

Performance Specifications:

Life Expectancy-- (at rated load and power conditions)
50,000 full stroke cycles plus
1,000,000 repositions at 10% stem travel or 10 years,
whichever occurs first.

Number of steps-- 40 +/- 10 per full stroke.

Note: rapid repositioning will result in reduced service life of the actuator.

Shipping Weight:

Approx. 1 kg (2.2 lbs)

ACCESSORIES/PARTS

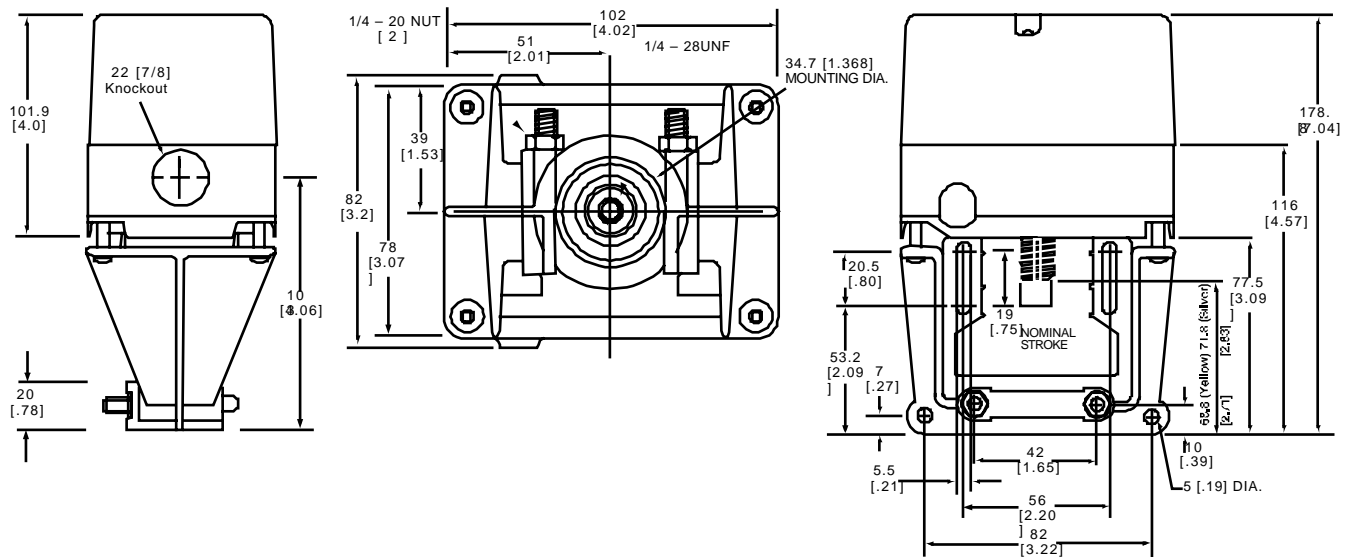
272630A--Auxiliary switch assembly (1-SPDT)

272630B--Auxiliary switch assembly (2-SPDT)

272775--Replacement motor brush kit

40003793-003--Mounting hardware bag assembly

272822-- Resistor kit for multiple Series 90 application
and for ML7984 to replace old ML784 (4-20mA)



Approximate dimension of the ML7984A valve actuator in mm (inch in bracket)

By using this Honeywell literature, you agree that Honeywell will have no liability for any damages arising out of your use or modification to, the literature. You will defend and indemnify Honeywell, its affiliates and subsidiaries, from and against any liability, cost, or damages, including attorneys' fees, arising out of, or resulting from, any modification to the literature by you.

Home and Building Control

Honeywell Limited -- Honeywell Limitée
155 Gordon Baker Road
North York, ON
Canada M2H 3N7

Home and Building Control

Honeywell Inc.
1985 Douglas Drive North
Golden Valley, MN 55422

Helping You Control Your World